

**ACADEMY OF BEAUTY**  
LA's Best Kept Secret

3834 MAIN STREET  
CULVER CITY, CALIFORNIA 90232  
(310) 837-0411  
*www.TheAcademy.LA*

---

## SCHOOL PERFORMANCE FACT SHEET

### Annual Report 2017

### ESTHETICS

#### Cost of Educational Program:

Total charges for the program for students completing on-time in 2017: \$7,475

Total charges may be higher for students that do not complete on-time.

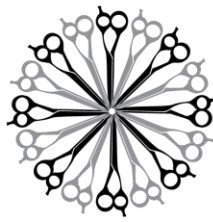
Student's Initials: \_\_\_\_\_ Date: \_\_\_\_\_

**Initial only after you have had sufficient time  
to read and understand the information**

Students at Academy of Beauty are not eligible for federal student loans. The U.S. Department of Education has determined that this institution does not meet the criteria that would allow its students to participate in federal student aid programs.

Student's Initials: \_\_\_\_\_ Date: \_\_\_\_\_

**Initial only after you have had sufficient time  
to read and understand the information**



**ACADEMY OF BEAUTY**  
LA's Best Kept Secret

3834 MAIN STREET  
CULVER CITY, CALIFORNIA 90232  
(310) 837-0411  
*www.TheAcademy.LA*

**SCHOOL PERFORMANCE FACT SHEET**  
**CALENDAR YEARS OF 2016 & 2017**

**Esthetics – 600 Hours**

**On-time Completion Rates**

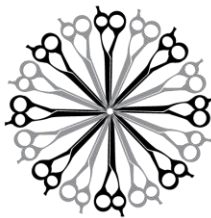
(Includes data for the two calendar years prior to reporting)

Calendar Year	Number of Students Who Began Program	Students Available for Graduation	Number of On-time Graduates	Completion Rate
2016	91	86	80	93%
2017	77	75	68	91%

**Job Placement Rates**

(Includes data for the two calendar years prior to reporting)

Calendar Year	Number of Students Who Began Program	Number of Graduates	Graduates Available for Employment	Graduates Employed in the Field	Placement Rate Employed in the Field
2016	91	86	78	69	88%
2017	77	75	65	60	92%



**ACADEMY OF BEAUTY**  
LA's Best Kept Secret

3834 MAIN STREET  
CULVER CITY, CALIFORNIA 90232  
(310) 837-0411  
*www.TheAcademy.LA*

### Gainful Employment Categories

(Includes data for the two calendar years prior to reporting)

#### Part Time vs. Full time Employment

Calendar Year	Graduates Employed in the Field 20 to 29 hours per week	Graduates Employed in the Field at least 30 hours per week	Total Graduates Employed in the Field
2016	21	48	69
2017	17	43	60

#### Single Position vs. Concurrent Aggregated Positions

Calendar Year	Graduates Employed in the Field in a Single Position	Graduates Employed in the Field in Concurrent Aggregated Positions	Total Graduates Employed in the Field
2016	68	3	69
2017	55	5	60

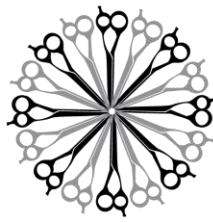
#### Self Employed/Freelance Positions

Calendar Year	Graduates Employed who are Self-Employed or Working Freelance	Total Graduates Employed in the Field
2016	3	69
2017	14	60

#### Institutional Employment

Calendar Year	Graduates Employed in the Field who are Employed by the Institution, an Employer Owned by the Institution, or an Employer who Shares Ownership with the Institution	Total Graduates Employed in the Field
2016	1	69
2017	1	60

Student's Initials: \_\_\_\_\_ Date: \_\_\_\_\_  
**Initial only after you have had sufficient time**



**ACADEMY OF BEAUTY**  
LA's Best Kept Secret

3834 MAIN STREET  
CULVER CITY, CALIFORNIA 90232  
(310) 837-0411  
*www.TheAcademy.LA*

**to read and understand the information**

This program may result in freelance or self-employment

- The work available to graduates of this program is usually for freelance or self-employment
- This type of work may not be consistent
- The period of employment can range from one day to weeks to several months
- Hours worked in a day or week may be more or less than the traditional 8 hours work day or 40 hours work week
- You can expect to spend unpaid time expanding your networks, advertising, promoting your services, or honing your skills.
- Once graduates begin to work freelance or are self-employed, they will be asked to provide documentation that they are employed as such so that they may be counted as placed for our job placement records
- Students initialing this disclosure understand that either a majority or all of this school's graduates are employed in this manner and understand what comprises this work style.

Student's Initials: \_\_\_\_\_ Date: \_\_\_\_\_

**Initial only after you have had sufficient time  
to read and understand the information**

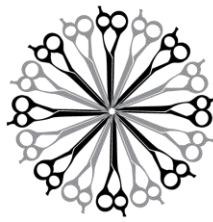
### License Examination Passage Rate

(Includes data for the two calendar years prior to reporting)

Calendar Year	Number of Graduates in Calendar Year	Number of Graduates Taking Exam	Number Who Passed First Available Exam	Number Who Failed First Available Exam	Passage Rate
2016	86	80	74	6	93%
2017	75	65	64	1	98%

Student's Initials: \_\_\_\_\_ Date: \_\_\_\_\_

**Initial only after you have had sufficient time  
to read and understand the information**



**ACADEMY OF BEAUTY**  
LA's Best Kept Secret

3834 MAIN STREET  
CULVER CITY, CALIFORNIA 90232  
(310) 837-0411  
*www.TheAcademy.LA*

**Salary and Wage Information**

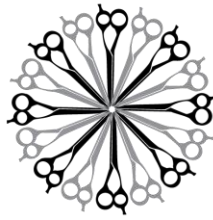
(Includes data for the two calendar years prior to reporting)

*Annual Salary Wages Reported for Graduates Employed in the Field*

Calendar Year	Graduates Available for Employment	Graduates Employed in the Field	Annual Salary and Wages Reported Graduates Employed in the Field					
			15,000-20,000	20,001-25,000	25,001-30,000	30,001-35,000	35,001-40,000	No Salary Information Reported
2016	78	69	4	23	25	16	1	0
2017	75	60	2	14	22	18	4	0

A list of sources used to substantiate salary disclosures is available from the school. To obtain this list, please ask an institutional representative where to view this list.

Student's Initials: \_\_\_\_\_ Date: \_\_\_\_\_  
**Initial only after you have had sufficient time to read and understand the information**



**ACADEMY OF BEAUTY**  
LA's Best Kept Secret

3834 MAIN STREET  
CULVER CITY, CALIFORNIA 90232  
(310) 837-0411  
*www.TheAcademy.LA*

This fact sheet is filed with the Bureau for Private Postsecondary Education. Regardless of any information you may have relating to completion rates, placement rates, starting salaries, or license exam passage rates, this fact sheet contains the information as calculated pursuant to state law.

Any questions a student may have regarding this fact sheet that have not been satisfactorily answered by the institution may be directed to the

Bureau for Private Postsecondary Education at:  
P.O. Box 980818,  
West Sacramento, CA 95798-0818,  
[www.bppe.ca.gov](http://www.bppe.ca.gov),  
P: 888.370.7589 or 916.431.6959, F: 916.263.1897

**I have read and understand this School Performance Fact Sheet. The School Performance Fact Sheet was reviewed and discussed with a school official prior to signing an enrollment agreement.**

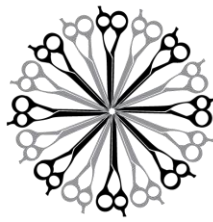
\_\_\_\_\_  
Student Name – Print

\_\_\_\_\_  
Student Signature

\_\_\_\_\_  
Date

\_\_\_\_\_  
School Official

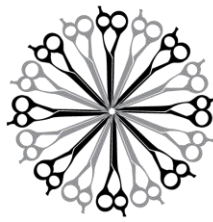
\_\_\_\_\_  
Date



## Definitions

The following are definitions for the Performance Fact Sheet:

- “Number of Students Who Began the Program” means the number of students who began the program who are scheduled to complete the program within 100% of the published program length within the reporting calendar year and excludes all students who cancelled during the cancellation period.
- “Students Available for Graduation” is the number of students who began program minus the number of students who have died, been incarcerated, or called to active military duty.
- “Number of On-time Graduates” is the number of students who completed the program within 100% of the published program length within the reporting calendar year.
- “On-time Completion Rate” is the number of On-time Graduates divided by the number of Students Available for Graduation.
- “150% Graduates” is the number of students who completed the program within 150% of the program length (includes on-time graduates).
- “150% Completion Rate” is the number of students who completed the program in the reported calendar year within 150% of the published program length, including on-time graduates, divided by the number of students available for graduation.
- “Graduates Available for Employment” means the number of graduates minus the number of graduates unavailable for employment
- “Graduates Unavailable for Employment” means graduates who, after graduation, die, become incarcerated, are called to active military duty, are international students that leave the United States, or are continuing their education in an accredited or bureau-approved postsecondary institution.
- “Graduates Employed in the Field” means graduates who beginning within six months after a student completes the applicable education program are gainfully employed, whose employment has been



**ACADEMY OF BEAUTY**  
LA's Best Kept Secret

3834 MAIN STREET  
CULVER CITY, CALIFORNIA 90232  
(310) 837-0411  
*www.TheAcademy.LA*

---

reported, and for whom the institution has documented certification of employment. For occupations for which the state requires passing an examination, the six months period begins after the announcement of the examination results for the first examinations available after a student completes an applicable educational program.

- “Placement Rate Employed in the Field” is calculated by dividing the number of graduates gainfully employed in the field by the number of graduates available for employment.
- “Number of Graduates Taking Exam” is the number of graduates who took the first available exam in the reported calendar year.
- “First Available Exam Date” is the date for the first available exam after a student completed a program
- “Passage Rate” is calculated by dividing the number of graduates who passed the exam by the number of graduates of graduates who took the reported licensing exam.
- “Number Who Passed the First Available Exam” is the number of graduates who took and passed the first available licensing exam after completing the program.
- “Salary” is as reported by graduates or graduate’s employer
- “No Salary Information Reported” is the number of graduates for whom, after making reasonable attempts, the school was not able to obtain salary information.